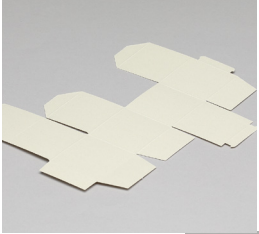


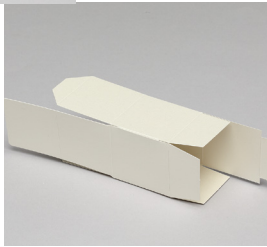
Two-Piece Square Favor Box Assembly

1 Favor Box Bottom

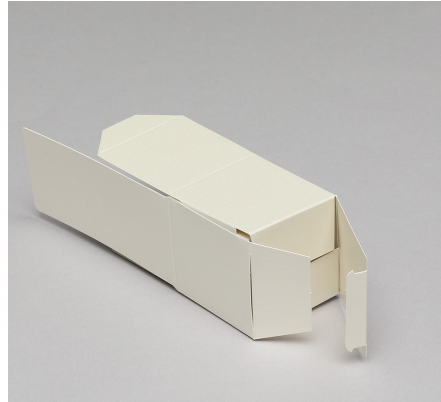
Lay the favor box bottom in front of you as shown and locate the tab on the far right. Insert the tab on the right into the slot located on the far left, bending along the scored lines as you go to form a box shape.



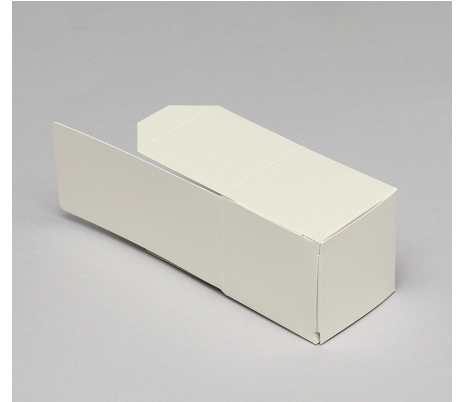
Tuck in the bottom three shorter flaps, folding along the scored edges, to begin forming the base of the favor box.



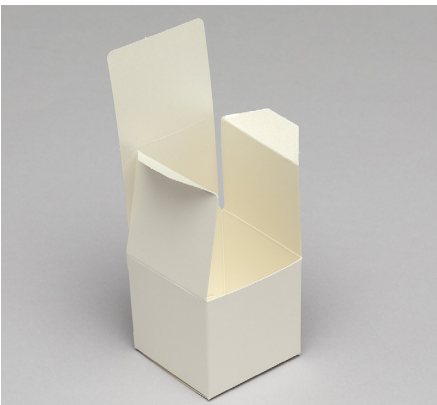
2 Fold the long flap over at the scored mark, and tuck the tab into the slot on the opposite side to secure the base of the favor box.



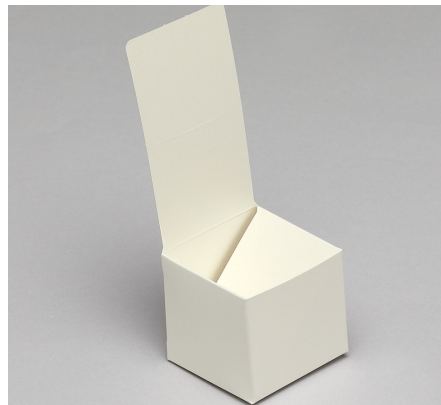
3 Place favor box upright and fold the two side flaps into the base of the box.



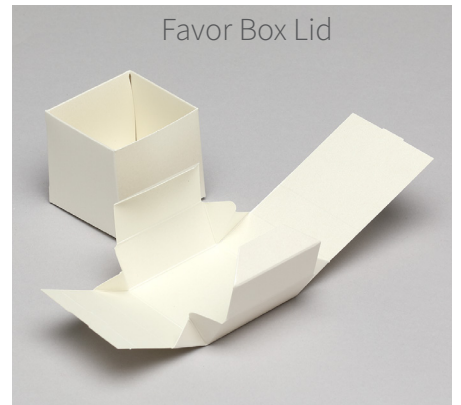
4 Place favor box upright and fold the two side flaps into the base of the box.



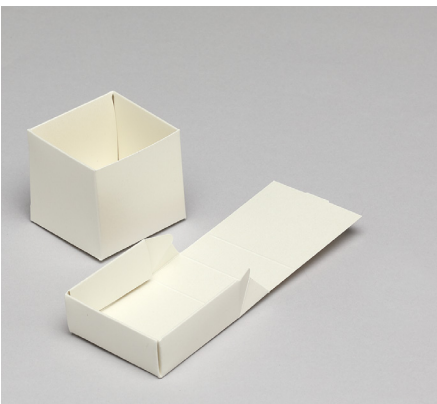
5 Fold the longer remaining flap into the base of the box to form a complete favor box bottom.



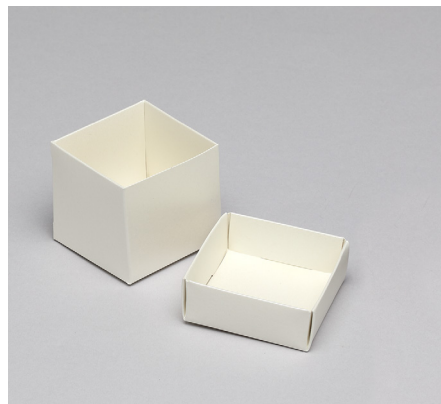
6 With the personalization or colored side down, fold all four sides of the lid upward along the horizontal scored edges. Then pinch corners in toward the center of the lid.



7 Fold the two identical sides inward along scored lines. Then fold the short flap down pressing the scored mark into the fold.



8 Fold the long flap in pressing the scored line into the fold. Insert the tab into the open slot on the opposite side.



9 Place the finished lid on top of the completed favor box bottom.

